



SRI BHAGYALAXMI GROUP OF COMPANIES



A PREMIUM GLOBAL
CONGLOMERATE

Info@sribhagyalaxmi.com | www.sribhagyalaxmi.com

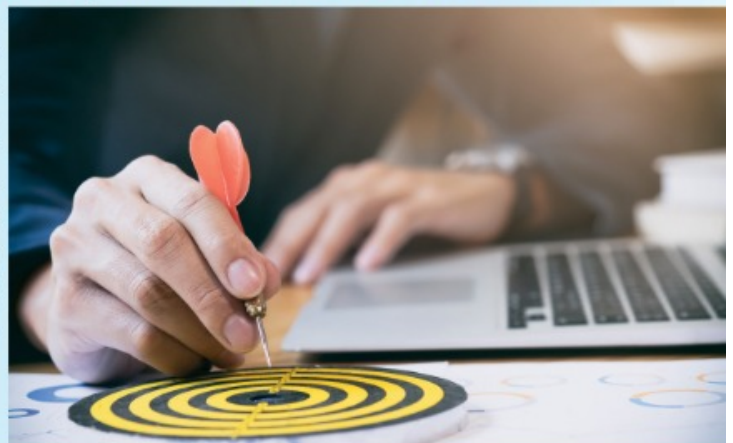


ABOUT SBL GROUP

THE SRI BHAGYALAXMI GROUP: A PREMIUM GLOBAL CONGLOMERATE.

Today, the Sri Bhagalaxmi Group under takes the main tasks in involving all the cadets in Coal mining from different Origins of the World. In the Medical field, 20 years of servicing health care through Manufacturer & Suppliers of Medical, Hospital, Surgical Products, in India & from Chemical division BL Group is widely committed to manufacturing a range of innovative specialty products that include various pharmaceutical dosage forms like tablets, injectable (vials, ampoules, form fill seal), creams & ointments, lozenges, herbal liquids and capsules. API, Intermediate's, ingredients, innovative solutions.

BPC PHARMA is a vertically integrated and R&D focused pharmaceutical company engaged in developing, manufacturing and marketing of finished dosage formulations ("FDF") and active pharmaceutical ingredients ("APIs"). Our focus is primarily on niche therapeutic areas and complex products. We market and distribute our products in over 40 countries. We sell our FDF products in the United States, India, Europe and the rest of the world ("RoW"). We also operate in certain key geographies through our subsidiaries. Sri Bhagalaxmi Group also grown a leadership in Minerals & Metals sector in providing a Ferrous, Non-Ferrous, Minor Metals/Precious Metals from different parts of the country. Sri Bhagalaxmi Group under takes in developing a Civil projects too in Singareni Civil contracts & mining managing division to prove their strength.





Mission

Business, as I have seen it, places one great demand on you: it needs you to self-impose a framework of ethics, values, fairness and objectivity on yourself at all times." - SBLGroup, 2000

Core values

Sri BagyalaxmiGroup has always been a values-driven organisation. These values continue to direct the growth and business of SBL companies. The five core SBL values underpinning the way we do business are:

Integrity

We will be fair, honest, transparent and ethical in our conduct; everything we do must stand the test of public scrutiny.

Responsibility

We will integrate environmental and social principles in our businesses, ensuring that what comes from the people goes back to the people many times over.

Excellence

We will be passionate about achieving the highest standards of quality, always promoting meritocracy.

Pioneering

We will be bold and agile, courageously taking on challenges, using deep customer insight to develop innovative solutions.

Unity

We will invest in our people and partners, enable continuous learning, and build caring and collaborative relationships based on trust and mutual respect.

OUR SERVICES

Coal Mining

Import Division

Metals & Minerals

Civil Projects

Medical Equipments

Chemicals

Pharmaceuticals



OUR CLIENTS



IMPORT | EXPORT
LOGISTICS | ENGINEERING
INFRASTRUCTURE PROJECTS
MEDICAL | PHARMA / CHEMICAL



SRI BHAGYALAXMI GROUP OF COMPANIES
Regd. Admin Office: Bhagyalaxmi House,
H.No.3-2-681/A/2101 Thirmal Apartments,
Thirmala Nagar, Amberpet, Hyderabad, Telangana - 500013
Phone: 040-2400900
Info@sribhagyalaxmi.com | www.sribhagyalaxmi.com